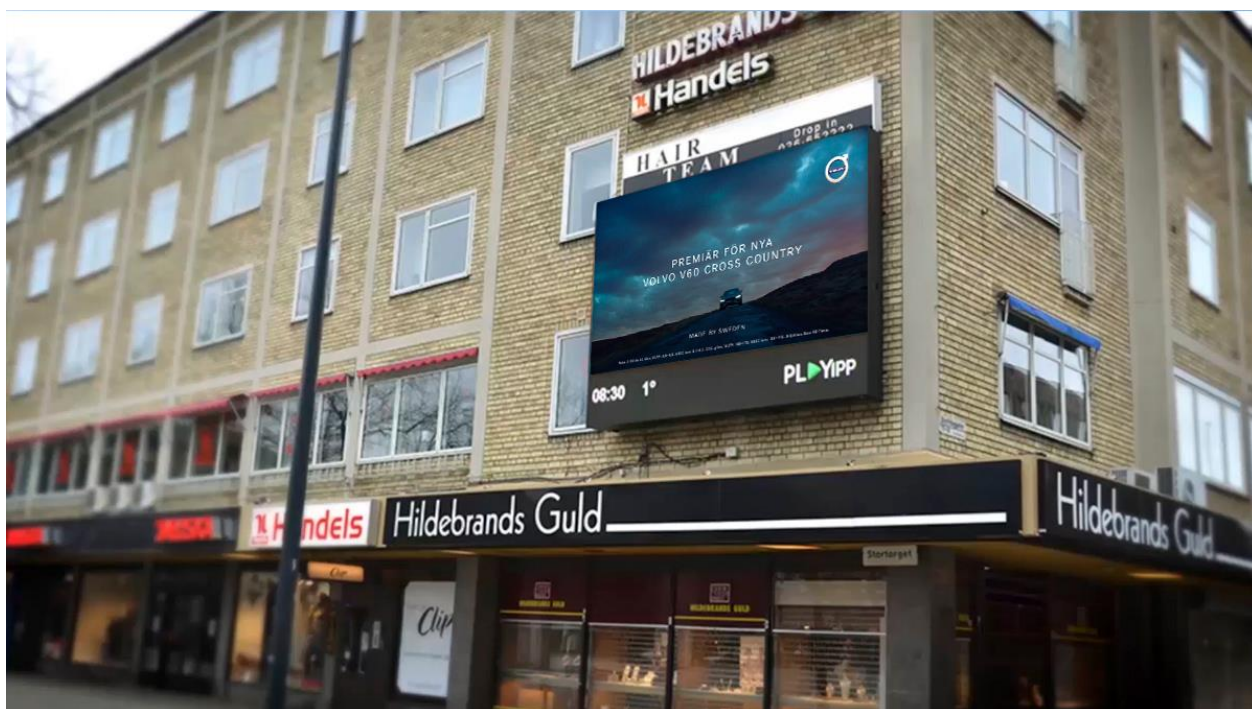


# MATERIAL SPECIFICATION – GÄVLE CITY LARGE FORMAT

## FORMATS

---

<b>RESOLUTION</b>	Width: 432 pixels Height: 244 pixels (108:61)
<b>FILE FORMAT</b>	mp4 .png or html
<b>CODECS</b>	H.264
<b>FRAMERATE</b>	25 frames per second
<b>LENGTH</b>	5 or 10 seconds (5 sec recommended)



## DELIVERY

---

Material is to be submitted to Ocean Outdoor no later than **3 business days** before broadcast. For HTML campaigns, please provide links no later than **10 business days** before broadcast.

Please note that when sending in files, the file name should **not** contain; special characters, space or å/ä/ö. Example of approved file name: *advertiser\_pixelsize\_campaigndate*

Delivery link: <https://oo-se.wetransfer.com/>

For questions regarding material, please do not hesitate to contact us at [adops@oceanoutdoor.se](mailto:adops@oceanoutdoor.se)

---

Hälsingegatan 45, 113 31 Stockholm, Sweden

+46 (0)8 15 32 00

[www.oceanoutdoor.se](http://www.oceanoutdoor.se)

[adops@oceanoutdoor.se](mailto:adops@oceanoutdoor.se)

**OCEAN**